



"PoJ Bouwer" | Flat top pontoon – 50,00m x 18,80m x 3,00m

General:

Yard number	TAB302
Type of Barge	TAB Marine Barge 5019
Flag	U.K., Newcastle
Basic functions	For deck and ro-ro cargo, available in a wide variety of sizes for all waters.
Descriptive note	Deck strengthened for loading and unloading heavy cargo.
Classifications	Bureau Veritas, I ✕ HULL, Unrestr. navigation, Unmanned towing.
Year of built	2020

Dimensions:

Length overall	50,00	meter
Breadth overall	18,80	meter
Depth	3,00	meter
Minimum draft	0,60	meter (from underside keel)
Maximum draft	2,45	meter (from underside keel)

Capacities:

Lightship weight	438,79	ton
Gross tonnage	697	ton
Net tonnage	209	ton
Deadweight max.	1.880	ton
Clear deck area	920	m ²
Deck load	20	ton/m ²

Construction:

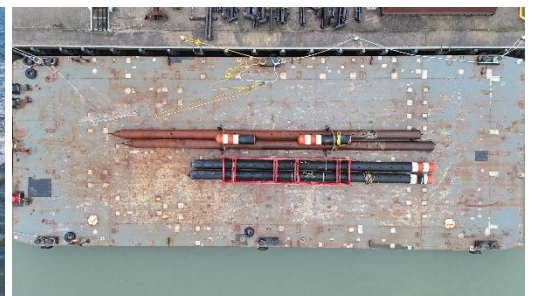
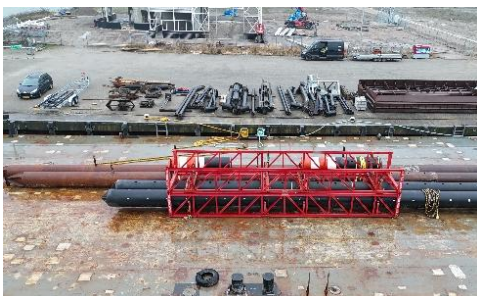
Deck plating	14 mm, extra heavy deck
Number of compartments	20 void spaces

Deck:

Spud arrangements	3x 2 at PS, 1 at SB ø 914
Lifting eyes	Four lifting eyes, SWL 300 ton
Container fittings	Base plates for 4x 20' container
Bollards	6x double bollards, SWL 20 ton
Boarding ladders	Recessed ladders 2x PS & 2x SB
Fendering	Tyre fenders on each corners
Masts	Fore- and aft mast
Light stands	PS and SB light stand
Deck marks	Every webframe
Cathodic protection	Zinc anodes
Manholes	Flush type single pt. manholes
Towing brackets	2x SMIT brackets, SWL 100 ton
Fairleads	3 pcs Fairleads at bow
Life saving	4 life buoys
Powerpack (optional)	20 kVA in 10" container

Options:

Spud poles (in spud cradle)	2x Spuds ø 914 x 23m
Loaded weight spud cradle	24 ton, lifted with 10m slings
Spud handling arrangement	Hydraulic cylinders optional
Deck equipment	Cranes and mooring equipment.



"PoJ Bouwer" | General Arrangement

