



"ISA" | Shallow Draft Anchor Handling Tug-/Push-/Workboat

Classification / Flag:

Flag / homeport	Dutch, Wijk bij Duurstede
Year of built	2015
Classification	Lloyd's Register ✠ 100A1, Tug, ✠ LMC, UMS <i>Limit. European Trading Area</i>
Class valid up to	2025
Call sign	PISA
IMO number	9769245
MMSI number	244571000

Dimensions:

Length O.A.	23,95 meters
Beam / width	8,00 meters
Depth moulded	3,10 meters
Working draft minimum	3,00 meters
Working draft maximum	3,60 meters
Air draft minimum	6,80 meters
Height of view max	14,50 meters
Gross tonnage	130 GT
Net tonnage	78 NT
Deck cargo cap.	2x 1 TEU
Clear deck area	50 m ² + 20ft container fittings
Cargo deck load	10 tons per m ²

Tank capacities / Transfer:

Fuel oil / gasoil	41.000 liters
Fresh water	10.000 liters
Transfer of fuel oil	50 m ³ /hr
Transfer of fresh water	25 m ³ /hr

Navigation & Radio:

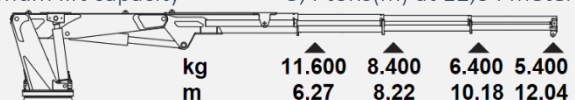
2x radars, Gyrocompass, 2x Auto Pilot, Magn. Compass, Echo Sounder, GPS, 3x VHF, MF/HF, NAVTEX, GSM, 2x ECDIS, AIS, 2x Handheld VHF radio's & CCTV

Machinery / Performances:

Bollard pull	30,6 tons
Max speed	11,5 knots
Main engines	2x Mitsubishi 2x S6R-Z3MPTAW 470 kW each @ 1600 rpm
Diesel electric combined	1.470 kW = 2.000 BHP
Reduction gear	2x Masson 1/5,85
Propulsion	Twin screw + Kort nozzles
Diameter propellers	1,85 meters Van Voorden
Rudders	4 fishtail rudders
Bow thruster	150 kW = 204 BHP
Generator sets	2x Mitsubishi 6D24-TCE2 1x Mitsubishi S4S-Z3DT61SD
Generator power	2x 240 kVA, 1x 40 kVA
Electrical powerpacks	2x, total power 48,5 kW

Deck Equipment:

Winch	Hägglunds. Two way brake.
Towing drum	Pull Force 40T, Holding F. 60T 700 meters x 38 millimeters
Anchor handling drum	Pull Force 40T, Holding F. 60T 400 meters x 38 millimeters
Towing pins	2 pins of 30 T SWL on sides Delta Towing pins and Shark Pin
Push bow	Rubber Fender, 80 cm dia.
Stern roller	Yes
Moonpool	Dimensions 500 mm dia.
Main marine deck crane	Heila crane type HLRM 80
Maximum lift capacity	5,4 tons(m) at 12,04 meters

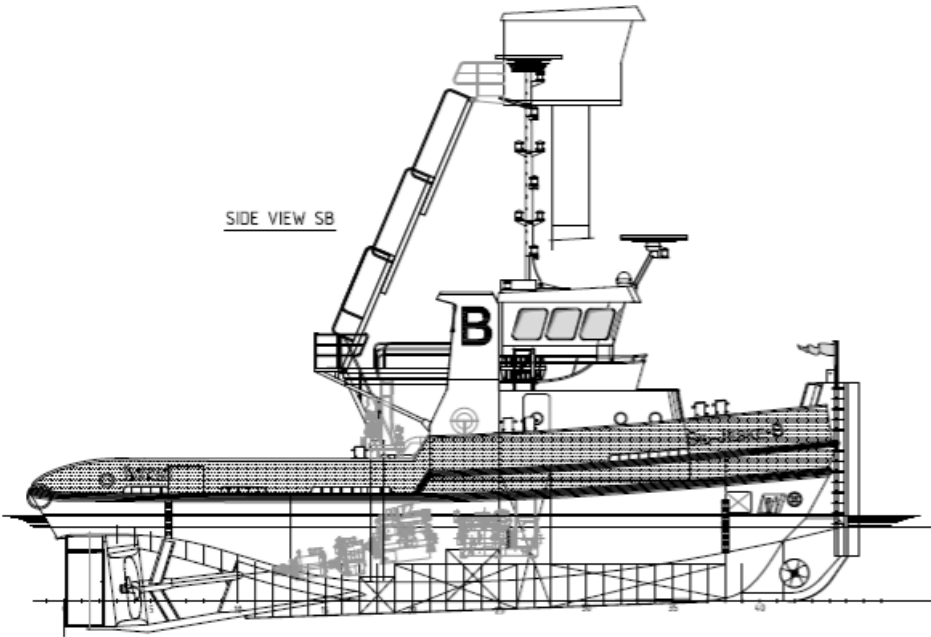


Accommodation:

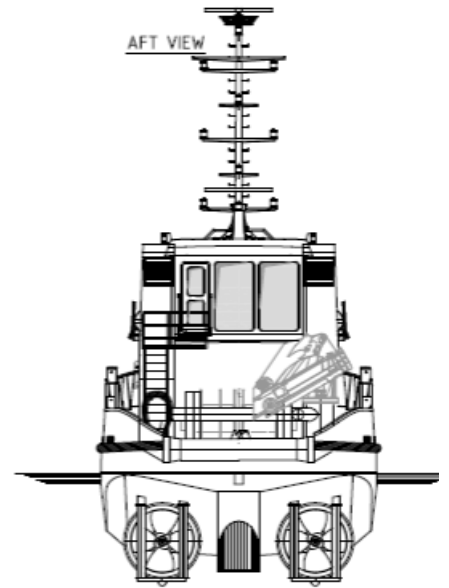
Facilities	Airconditioned, 4 berths
------------	--------------------------

"ISA" | General Arrangement

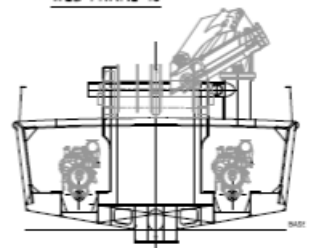
SIDE VIEW S8



AFT VIEW



WEB FRAME 18



VIEW BELOW DECK

