



"GPS AVENGER" | Shallow Draft Anchor Handling Tug / Utility Vessel

Classification / Flag:

| | |
|-------------------|---|
| Flag / homeport | UK, London |
| Year of built | 2013 |
| Classification | Bureau Veritas I ✘ HULL ✘ MACH Tug <i>Unrestr. Navigation MCA Cat 1</i> |
| Class valid up to | 2023 |
| Call sign | 2GVV2 |
| IMO number | 9681675 |
| MMSI number | 235100957 |

Dimensions:

| | |
|-------------------------|----------------------------|
| Length O.A. | 27,02 meters |
| Beam / width | 9,35 meters |
| Depth at sides | 3,60 meters |
| Draft (min. – max.) | 2,56 – 3,00 meters |
| Air draft (min. – max.) | 9,50 – 16,0 meters |
| Gross & Net tonnage | 141,6 GT/NT |
| Clear deck area | 46 m ² |
| Cargo cap. | 3x 1 TEU |
| Cargo deck load | 10 tons per m ² |

Tank capacities / Transfer:

| | |
|-------------------------|-----------------------|
| Fuel oil / gasoil | 125.100 liters |
| Fresh water | 30.000 liters |
| Transfer of gasoil | 15 m ³ /hr |
| Transfer of fresh water | 15 m ³ /hr |

Accommodation:

| | |
|------------|------------------------------------|
| Facilities | Airconditioned 7 bunks (5 crew) |
|------------|------------------------------------|

Navigation & Radio:

2x Radar, Echo sounder, ECDIS, V-Sat, GSM, AIS, Navtex, Autopilot, SSB/DSC, 2x Compass, SART, Speed log, 4x VHF, 2x Mini-C + GMDSS, GPS, Inmarsat-C, 2x Searchlight 2000W

Machinery / Performances:

| | |
|---------------------|----------------------------------|
| Bollard pull | 39,3 tons |
| Max speed | 11,9 knots |
| Main engines | 2x Caterpillar 3512C TA/A |
| Total output | 2.238 kW = 3.000 BHP |
| Propulsion | Twin fixed propellers in nozzles |
| Diameter propellers | 2,10 meters |
| Bow thruster | 200 BHP, hydraulic driven |
| Generator sets | 2x Caterpillar C-4.4 TA |
| Generator hydraulic | 1x Caterpillar C-09 TA, 269kW |
| Generator power | 2x 86,3 kVA, 50Hz, 230/400V |

Deck Equipment (running on biodegradable lubricant oil):

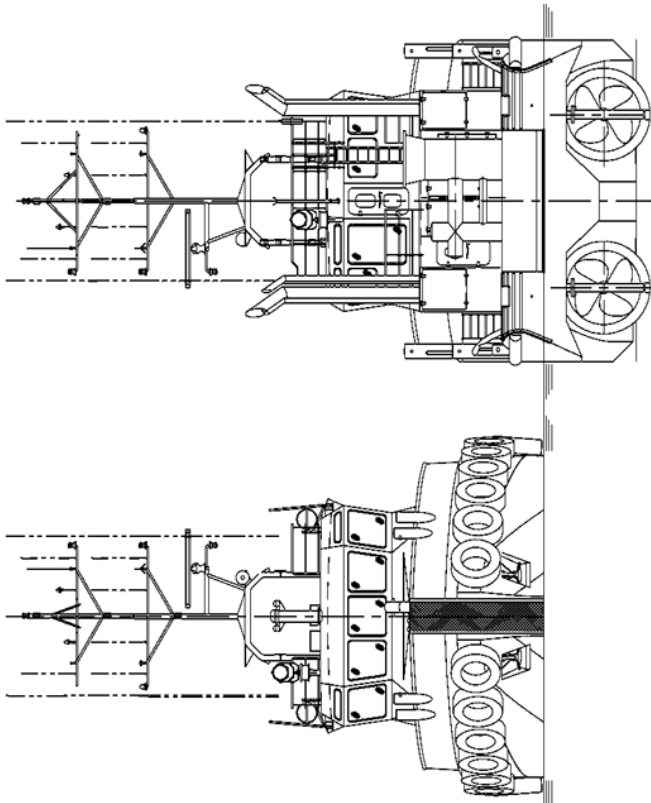
| | |
|------------------------|---|
| Winch | DMT Waterfall Winch |
| Towing drum | Pull Force 50T, Holding F. 120T 850 meters x 40 millimeters |
| Anchor handling drum | Pull Force 100T, Holding F. 120T 650 meters x 40 millimeters |
| Tuggerwinch | Dromec HPV12000, 12 tons(m) |
| Towing pins | Double pin, SWL 50 ton |
| Chain stopper | Yes, SWL 75 ton |
| Push bow | Double rubber fender suitable for bow landing operations |
| Coupling winches | 2x 40 tons for pushing mode |
| Stern roller | 4 mtr x 0,96 mtr, SWL 50t |
| Main marine deck crane | Heila HLRM 140-4SL |
| Maximum lift capacity | 5,3 tons(m) at 18,03 meters |
| Crane winch | SWL 5,0 tons |

| | | | | | |
|----|--------|--------|-------|-------|-------|
| kg | 16.800 | 11.900 | 8.500 | 6.550 | 5.300 |
| m | 7,69 | 10,24 | 12,79 | 15,34 | 18,30 |

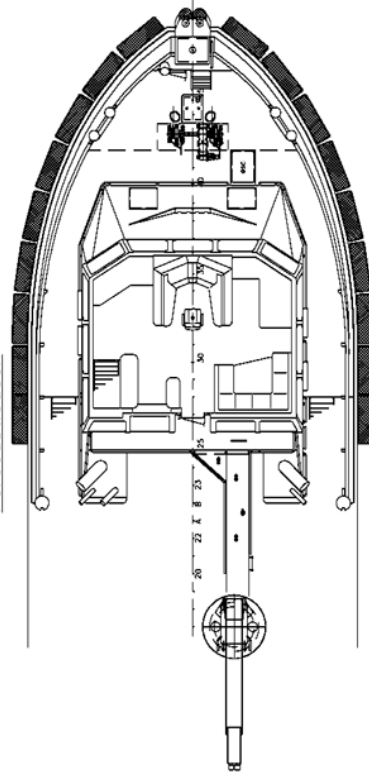
Survey Equipment:

| | |
|----------------------------------|---|
| Moonpool | Situated forward peak |
| Digital Plough Monitoring System | Tower Software Ltd, real time Digital progress system and log |

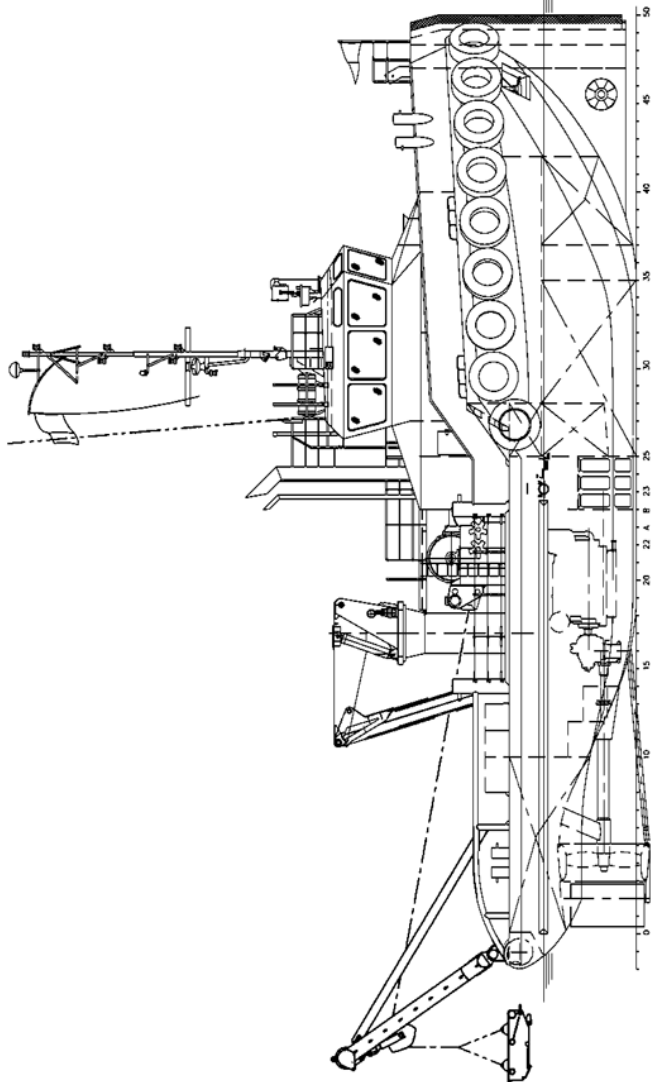
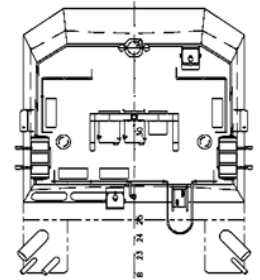
"GPS AVENGER" | General Arrangement



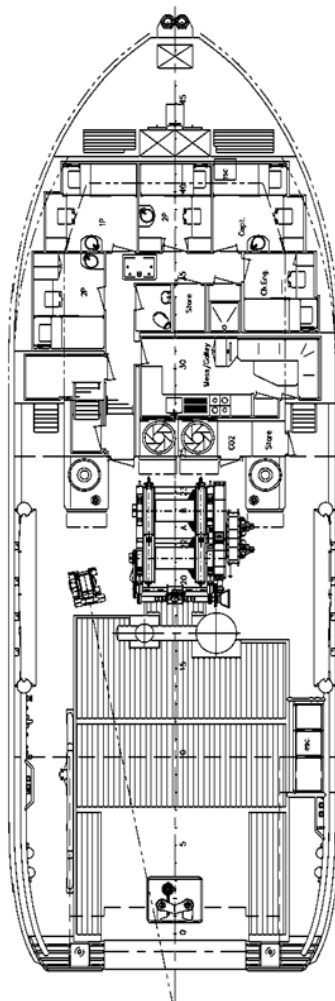
Forecastledeck



Topdeck



Maindeck



Below maindeck

