



## "GPS CAMBRIA" | Coastal Towing & Pushing vessel / 1606 Stan tug

### Classification / Flag:

Flag / homeport	UK, London
Year of built	2009
Licensing authority	MCA
Navigational limits	Cat 2 60 miles offshore
Trading area	Coastal
Call sign	MBYZ3
Official number	922107
MMSI number	232011626

### Dimensions:

Length O.A.	16,56 meters
Beam / width	5,54 meters
Draft (min.)	2,30 meters
Draft (max.)	2,40 meters
Air draft (min.)	5,60 meters
Gross tonnage	37,28 GT
Net tonnage	37,28 NT

### Tank capacities / Transfer:

Fuel oil / gasoil	14.200 liters
Fresh water	1.100 liters
Lube oil	250 liters
Waste oil	500 liters
Sewage	800 liters

### Machinery / Performances:

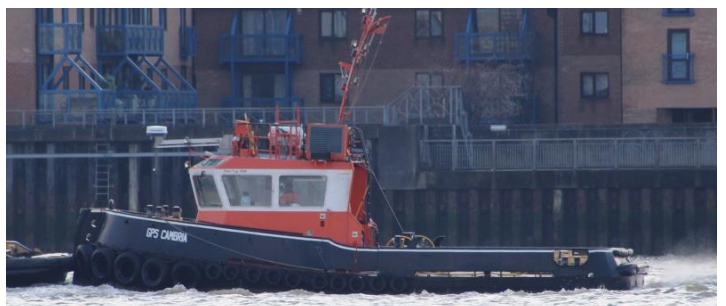
Bollard pull	16,4 tons
Max speed	14,0 knots
Main engine manufacturers	2x Caterpillar
Engine model	C18 ACERT
BHP each engine	600 BHP
RPM	1.800
Total output	895 kW = 1.200 BHP
Gearbox manufacturers	Reintjes
Gearbox model	WAF264
Ratio	4,5:1
Propellers	Twin fixed propellers
Nozzles	Optima nozzles
Generator sets	Caterpillar

### Deck Equipment:

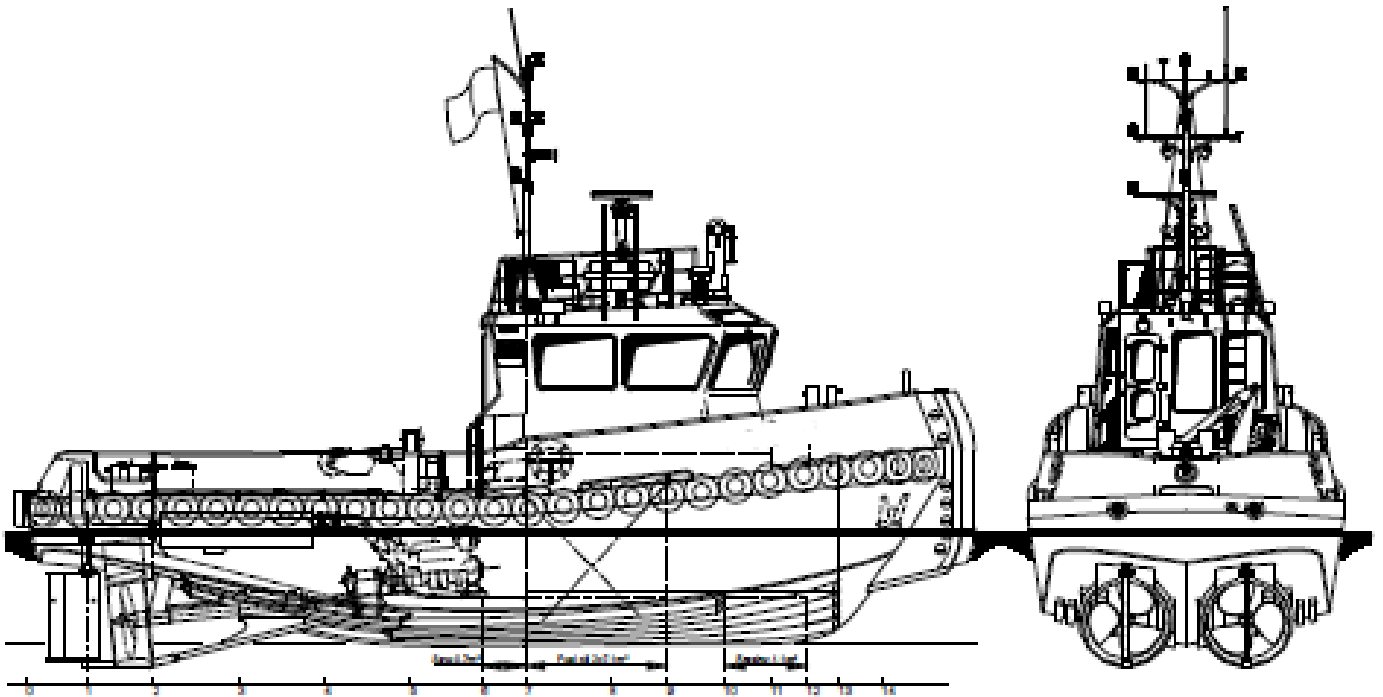
Towing hook	Mampey Quick Release
Coupling winches	2x 40 tons for pushing mode
Deck crane	Electric
Number of anchors and type	1x 80 kg Pool
Anchor chain	1x 100m x 13mm

### Accommodation:

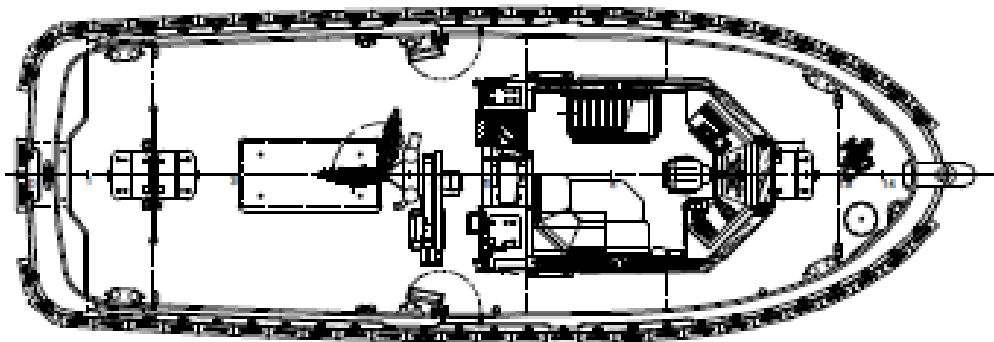
Facilities	Airconditioned accommodation
Sleeping cabins	1x 4 person / 4 bunks



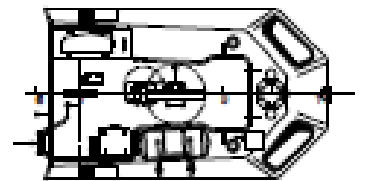
# "GPS CAMBRIA" | General Arrangement



Maindeck



Topdeck



Below Maindeck

