



"GPS 602" | Flat top pontoon – 60,00m x 20,00m x 4,00m

General:

Yard number	GPS 601 and GPS 602
Type of Vessel	Damen Stan Pontoon 6020
Flag	United Kingdom
Basic functions	For deck and ro-ro cargo, available in a wide variety of sizes for all waters.
Descriptive note	Bottom strengthened for loading and unloading bottom aground.
Classifications	Bureau Veritas, I ✕ HULL, Unrestr. navigation, Unmanned towing.
Year of built	2016

Dimensions:

Length overall	60,00	meter
Breadth overall	20,00	meter
Depth	4,00	meter
Minimum draft	0,78	meter (from underside keel)
Maximum draft	3,20	meter (from underside keel)

Capacities:

Lightship weight	776	ton
Gross tonnage	1.217	ton
Net tonnage	365	ton
Deadweight max.	2.840	ton
Clear deck area	1.175	m ²
Deck load	20	ton/m ²

Construction:

Deck plating	16 mm, extra heavy deck
Number of compartments	22 void spaces: 4.360 m ³

Deck:

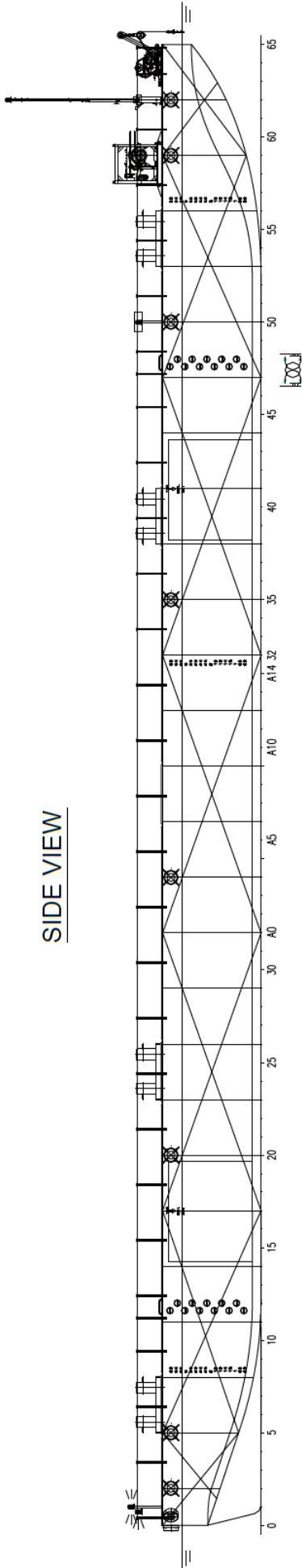
Spud arrangements	2x at PS side ø 1.020 x 20 mm
Ramp	Ramp recess at bow (8 x 1,5m) and stern (8 x 1,5m)
Lifting eyes	Four lifting eyes flush with main deck and covered with bolted steel plates to lift the pontoon
Railing	Removable stanchions + wire
Anchor winch on bow	HHP 765 kg anchor, electric
Fendering	Tyre fender system
Bridle recovery winch	Yes, 20 tons
Bollards	8x double, 3x single on aft/fwd
Boarding ladders	Recessed ladders 2x PS & 2x SB
Manholes	Flush type single pt. manholes
Towing brackets	3x SMIT brackets 71 ton SWL
Powerpack	20 kVA in 10" container

Options:

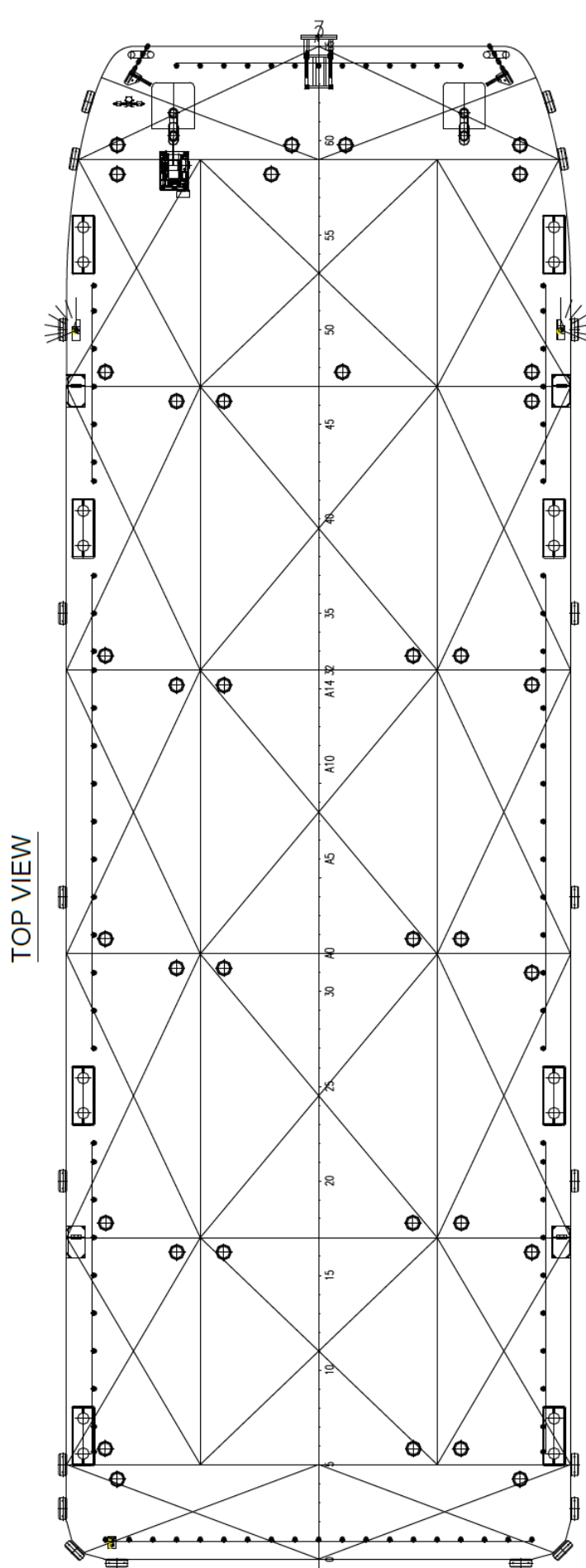
Towing arrangement	Towing bridle with chains
Spud poles	Spuds with diameter 914 mm
Spud handling arrangement	Hydraulic cylinders
Deck equipment	Cranes and mooring equipment.



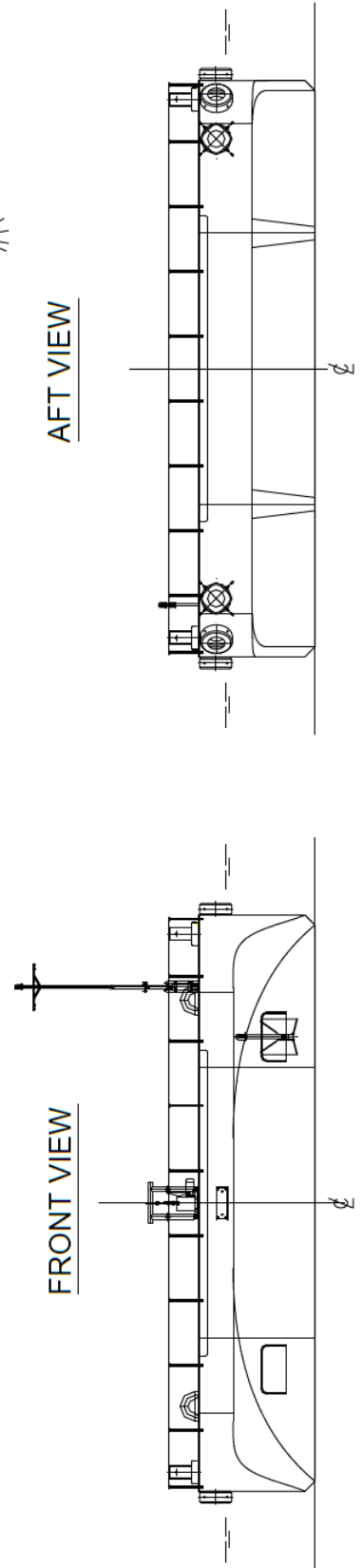
"GPS 602" | General Arrangement



SIDE VIEW



TOP VIEW



AFT VIEW

FRONT VIEW