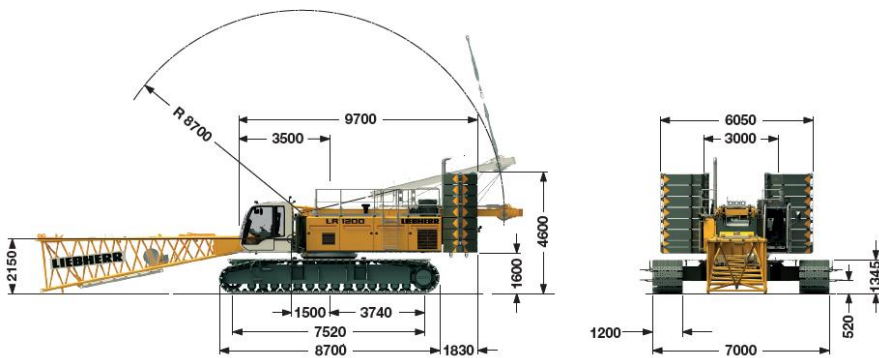
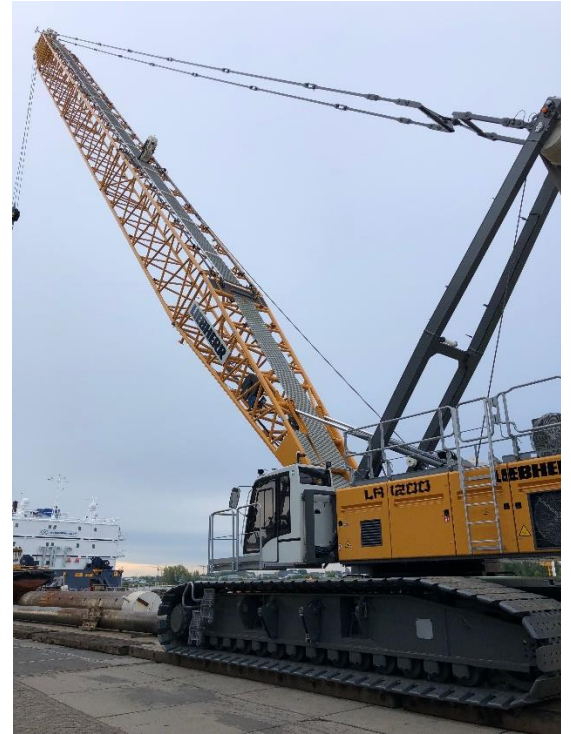


Characteristics Liebherr LR 1200 crawler crane

Make:	Liebherr
Type:	LR 1200
Max. lift capacity:	220 t
at radius:	12.00 m
Boom length:	20.0 – 62.0 m
Auxiliary jib:	Runner 24 Tons
Main winches:	2x 26 mm, 120 kN line pull (7 th layer)
Rope speed:	0 – 136 m/min
Carbody counterweight:	36 t
Basic counterweight:	82,3 t
Engine power:	230 kW (308 hp) at 1700 rpm
Driving speed:	1.6 km/h
Operating weight:	+/- 210 t (basic boom 20 m)
Fuel tank capacity:	790 liter
Oil tank capacity:	650 liter



LIFT CHART FOR MAIN BOOM

CAPACITIES IN METRIC TONNES FOR BOOM LENGTHS (20 M - 89M) - WITH 120 KN WINCHES

RADIUS (M)	20 T	26 T	32 T	38 T	44 T	50 T	56 T	62 T	68 T	74 T	80 T	86 T	89 T
4.1	220.0												
5	217.0	162.8	153.6										
6	185.8	159.0	150.7	140.3	114.8								
7	162.1	152.1	141.4	129.5	107.8	90.1	80.3	65.4					
8	138.5	129.4	121.4	114.2	100.9	83.7	77.6	64.9	52.1	45.0			
9	119.4	112.4	106.2	100.5	93.2	78.8	74.8	62.1	50.3	44.7	37.0	30.2	26.6
10	104.4	99.2	94.2	89.5	85.3	73.6	71.9	60.2	48.3	43.1	36.0	30.0	26.6
12	79.9	79.9	76.7	73.3	70.2	66.3	64.5	55.6	44.6	40.7	34.0	28.2	25.2
14	64.3	64.3	64.3	61.7	59.4	57.0	54.9	52.3	41.4	38.1	31.7	26.6	24.0
16	53.4	53.5	53.4	53.1	51.2	49.3	47.5	45.8	38.8	36.2	29.9	25.0	22.5
18	45.5	45.5	45.5	45.3	44.9	43.2	41.7	40.2	36.0	34.3	28.5	23.7	21.3
20	39.3	39.5	39.4	39.2	39.0	38.3	37.0	35.7	33.7	32.6	27.0	22.6	20.4
26		27.4	27.5	27.3	27.1	26.8	26.5	26.1	25.1	24.2	23.2	19.9	17.7
32			20.4	20.3	20.1	19.8	19.5	19.1	18.8	18.3	17.5	16.5	16.1
38				15.6	15.5	15.2	14.9	14.5	14.2	13.8	13.3	12.5	12.1
44					12.1	11.9	11.7	11.3	11.0	10.6	10.3	9.6	9.3
50						9.4	9.2	8.8	8.5	8.1	7.8	7.4	7.1
55							7.5	7.2	6.9	6.5	6.2	5.8	5.6
60									5.5	5.2	4.8	4.4	4.3
65									4.4	4.0	3.7	3.3	3.1
70										3.0	2.7	2.3	2.2