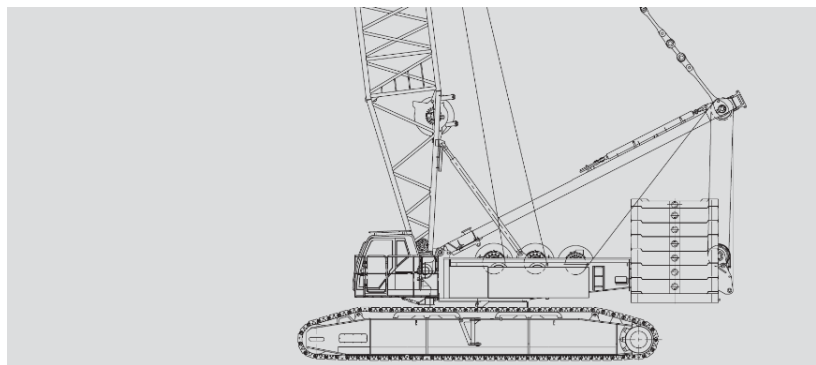


# Characteristics Sany SCC 3200 crawler crane

**Make:** Sany  
**Type:** SCC 3200  
**Horsepower:** 298 kW @ 2100 RPM  
**Lifting capacity:** 320 ton/5m (basic arm length 18m)  
**Main boom length:** 18-84 mtr.  
**Main boom luffing angle:** 30° – 85°  
**Weight:** 340 ton  
**Pull 1st layer:** 29 ton  
**Max central ballast:** 40 ton  
**Max derrick ballast:** 150 ton  
**Transport dimensions (LxWxD):** 1265 x 340 x 345 cm  
**Hooks:** 15/100/150/200 ton  
**Building year:** 2008



360°		7.3 m		n -		150.0 t		40.0 t		18.0-60.0m		85-30°		66.0-84.0m		85-30°	
14 m/s		14 m/s		14 m/s		11 m/s		11 m/s		11 m/s		11 m/s		11 m/s		11 m/s	
18.0 m		24.0 m		30.0 m		36.0 m		42.0 m		48.0 m		54.0 m		60.0 m		84.0 m	
n=2x14		n=2x14		n=2x14		n=2x12		n=2x10		n=2x8		n=13		n=11		n=5	
5.0	320	83.0															
5.5	319	81.4															
6.0	317	79.8															
6.5	309	78.1															
7.0	302	76.5															
7.5	295	74.8															
8.0	284	73.1															
9.0	240	69.7															
10.0	207	66.1															
11.0	182	62.5															
12.0	163	58.7															
13.0	147	54.6															
14.0	133	50.4															
15.0	122	45.8															
16.0	113	40.8															
18.0	113	40.8															
20.0	17.8/98.4	30.0															
22.0																	
24.0																	
26.0																	
28.0																	
30.0																	
32.0																	
34.0																	
36.0																	
38.0																	
40.0																	
42.0																	
44.0																	
46.0																	
48.0																	
50.0																	
52.0																	
54.0																	
56.0																	