



## "DUTCH PEARL" | Shallow Draft Anchor Handling Tug / Utility Vessel

### Classification / Flag:

Flag / homeport	Dutch, Zierikzee
Year of built	2010
Classification	Lloyd's Register 100 A1 Tug LMC, UMS, ✠ HULL ✠ MACH Unrestr. Nav.
Class valid up to	2020
Call sign	PBZP
IMO number	9547881
MMSI number	246376000

### Dimensions:

Length O.A.	31,10 meters
Beam / width	9,50 meters
Depth at sides	3,10 meters
Draft (min. – max.)	2,80 – 3.10 meters
Air draft (min. – max.)	9,50 – 16,0 meters
Gross tonnage	254 GT
Net tonnage	76 NT
Deck cargo cap.	3x 1 TEU
Clear deck area	108 m <sup>2</sup>
Cargo deck load	15 tons per m <sup>2</sup>

### Tank capacities / Transfer:

Fuel oil / gasoil	112.000 liters
Fresh water	31.000 liters
Lube oil / Dirty oil / Sewage	2.650 / 2.650 / 12.720 liters
Fresh water generator	3,5 m <sup>3</sup> /day
Transfer of fuel oil	35 m <sup>3</sup> /hr
Transfer of fresh water	35 m <sup>3</sup> /hr

### Navigation & Radio:

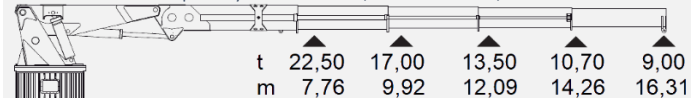
2x Radar, ECDIS, AIS, Echo sounder, GPS, Autopilot, 2x Compass, Navtex, SART, EPIRB, VHF, SSB, V-Sat, CCTV, 2x Inmarsat-C+F & GMDSS Sea Area: A1, A2, A3

### Machinery / Performances:

Bollard pull	46,2 tons
Max speed	12,5 knots
Main engines	2 x Mitsubishi S16R-MPTA
Total output	2.340 kW = 3.182 BHP
Propulsion	Twin fixed propellers in nozzles
Diameter propellers	2,10 meter, Van Voorden
Bow thruster	340 kW
Generator sets	2x Mitsubishi 6D 16 T
Generator power	2x 120 kVa
Hydraulic powerpack	1x Mitsubishi S6A3 MPTK 600hp

### Deck Equipment:

Winch	Maaskant Double Drum Winch
Towing drum	Pull Force 50T, Holding F. 80T 700 meters x 42 millimeters
Anchor handling drum	Pull Force 50T, Holding F. 80T 350 meters x 42 millimeters
Tuggerwinch	2x 8 tons, 40mtr x 18mm wire
Towing pins	Yes
Wire catcher	Yes, Karmoy fork
Push bow	Rubber Fender 900 mm
Stern Roller	4.840 mm x dia 700 mm
Moonpool	Dimensions 700 mm x 700 mm Incl. David crane for lifting Situating portside midships
Main marine deck crane	HEILA HLRM 200-4SL
Maximum lift capacity	9,0 tons at 16,31 meters

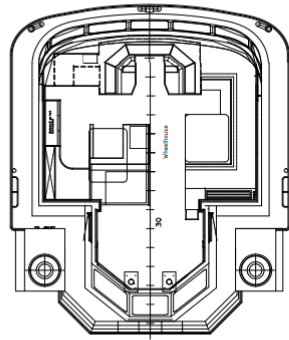


### Accommodation:

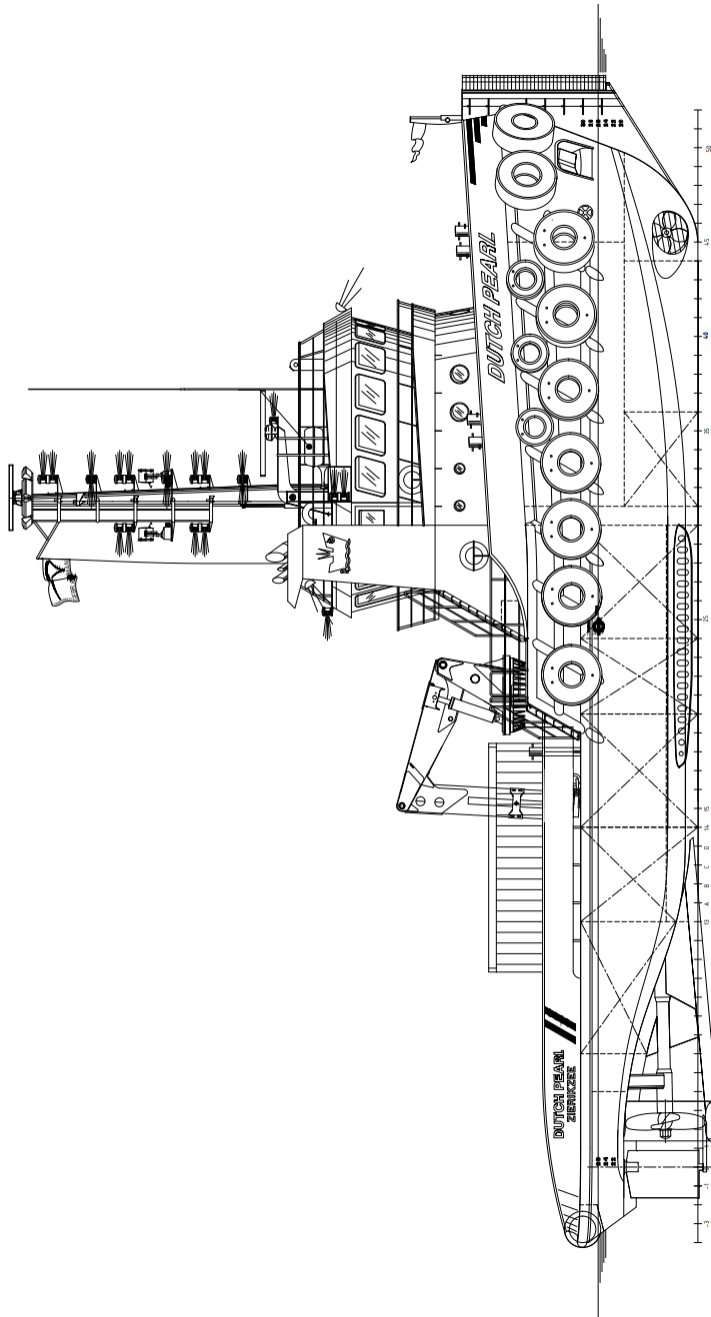
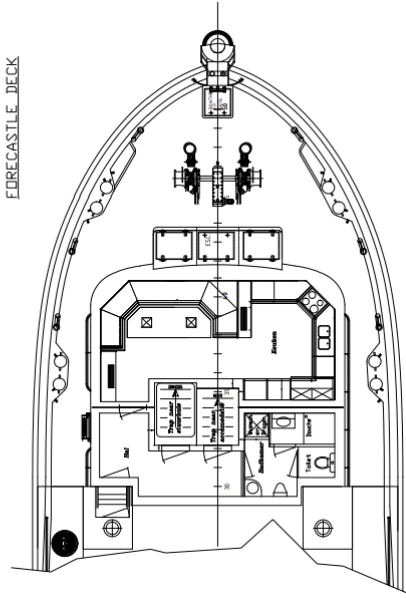
Facilities	Airconditioned, 8 berths
------------	-----------------------------

# "DUTCH PEARL" | General Arrangement

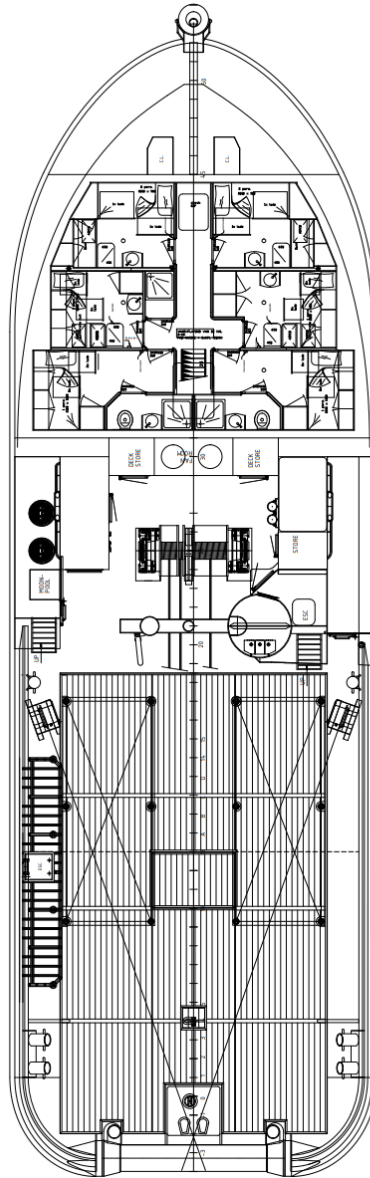
BRIDGE\_DECK



FORECASTLE\_DECK



MAIN\_DECK/BETWEEN\_DECK



TANKTOP

