



"NEPTUN 11" | Anchor Handling Tug Supply / Utility Vessel

Classification / Flag:

Flag / homeport	U.K., Gibraltar
Year of built	2011
Classification	Bureau Veritas I X HULL X MACH AUT UMS <i>Unrestricted Nav.</i>
Class valid up to	2021
Call sign	ZDKE9
IMO number	9571208
MMSI number	423660310

Dimensions:

Length O.A.	36,00 meters
Beam / width	10,40 meters
Depth at sides	5,00 meters
Draft (min. – max.)	3,80 – 4,15 meters
Air draft	17,0 meters
Gross tonnage	459 GT
Net tonnage	137 NT
Deck cargo cap.	6x 1 TEU, 90 tons
Clear deck area	120 m ²
Cargo deck load	5 tons per m ²

Tank capacities / Transfer:

Fuel oil / gasoil	305.000 liters
Fresh water	100.000 liters
Fresh water generator	2,5 m ³ /day
Transfer of fuel oil	50 m ³ /hr
Transfer of fresh water	20 m ³ /hr

Navigation & Radio:

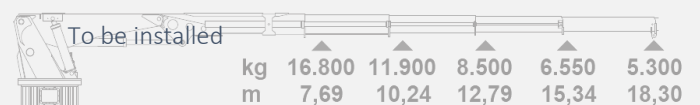
Radar, AIS, echo sounder, speed log, GPS, autopilot, Navtex, 2x compass, SART, V-SAT + FBB, EPIRB, VHF, SSB, Inmarsat C + GMDSS A3

Machinery / Performances:

Bollard pull	42,8 tons
Max speed	12,0 knots
Sailing radius without tow	14.000 miles
Sailing radius with tow	7.000 miles
Main engines	2x Cummins KTA-50-M2
Total output	2.388 kW = 3.244 BHP
Propulsion	Twin fixed propellers in nozzles
Diameter propellers	2,10 meters
Bow thruster	320 kW, Van Ballegooy
Generator sets	2x Cummins QSM11-D(M) 1x Cummins 6CTA8.3-D(M)
Generator power	2x 240 kW + 1x 136 kW / 400 V
Hydraulic powerpack	ME HPU-090426 / 2x 30 kW

Deck Equipment:

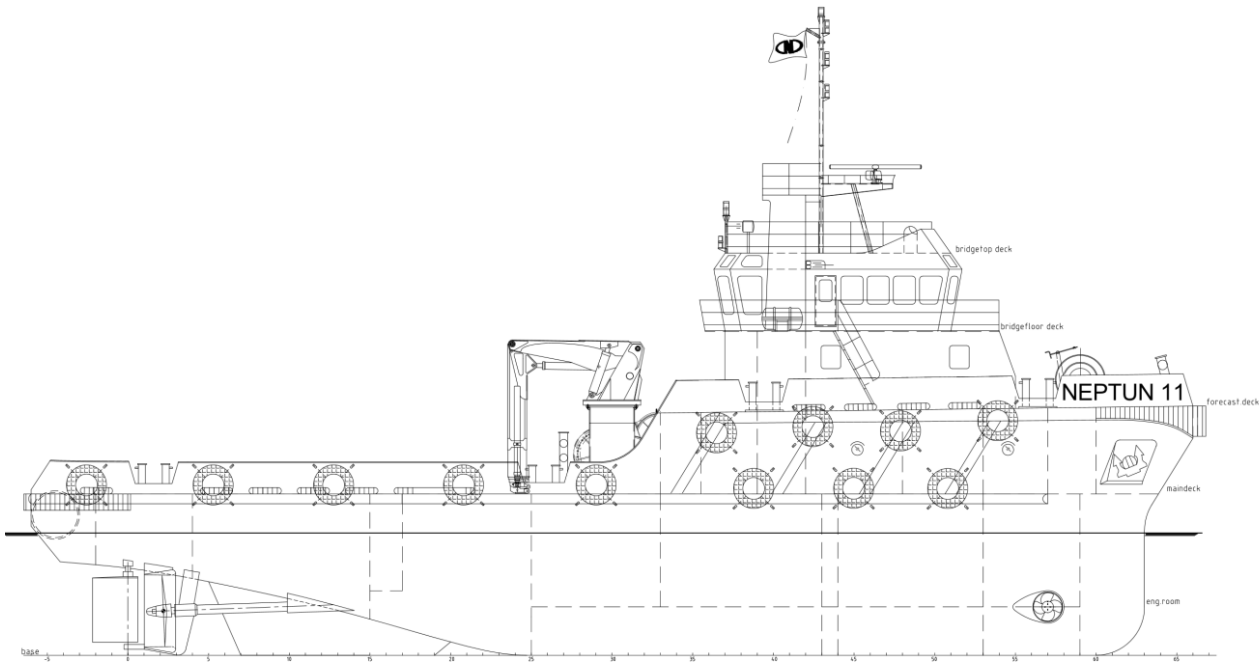
Winch	ME Double Drum Waterfall
Towing drum	Pull Force 50T, Holding F. 100T
Anchor handling drum	Pull Force 50T, Holding F. 100T
Tow wires	2x 800 meters
Tow wire diameter	48 millimeters
Tuggerwinch	5 tons
Towing pins	2 pc, SWL 200 ton
Wire catcher	2 pc, SWL 200 ton
Stern roller	SWL 200 ton
Main marine deck crane	Heila 140-4S1 To be installed
Maximum lift capacity	5,3 tons @ 18,3 meters



Accommodation:

Facilities	Airconditioned, 9 berths
------------	--------------------------

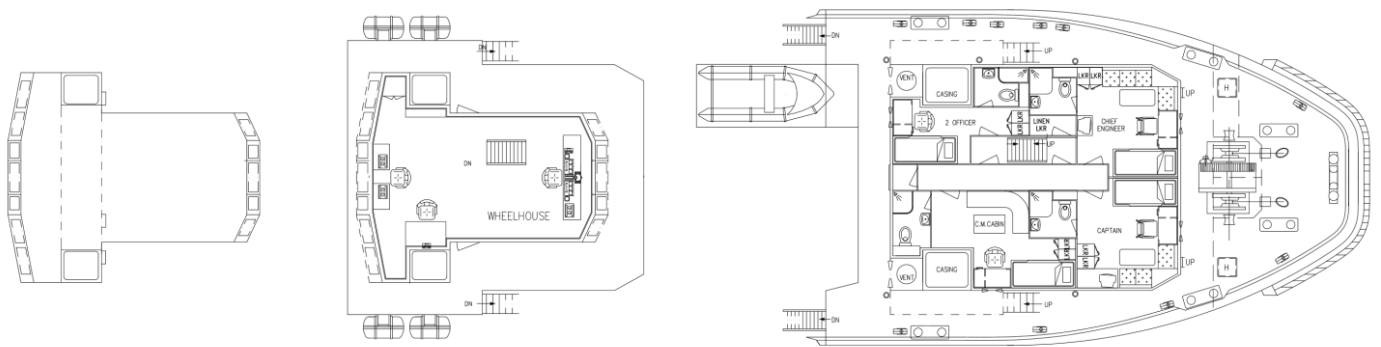
"NEPTUN 11" | General Arrangement



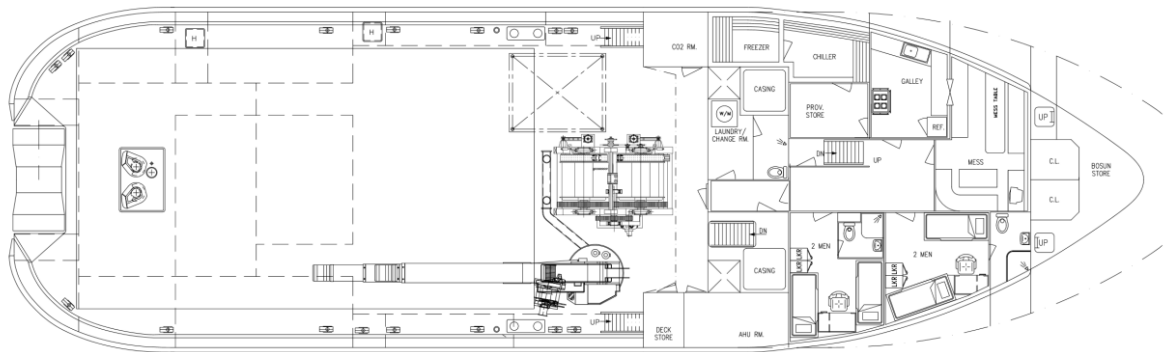
BRIDGETOPDECK

BRIDGEFLOORDECK

FORECASTLEDECK



MAINDECK



ENGINE ROOM

