



"DUTCH POWER" | Shallow Draft Anchor Handling Tug / Utility Vessel

Classification / Flag:

Flag / homeport	Dutch, Zierikzee
Year of built	2009
Classification	Bureau Veritas I \boxtimes HULL \boxtimes MACH Tug <i>Unrestr. Navigation AUT-UMS</i>
Class valid up to	2019
Call sign	PBTZ
IMO number	9547879
MMSI number	246607000

Dimensions:

Length O.A.	31,10 meters
Beam / width	9,50 meters
Depth at sides	3,10 meters
Draft (min. – max.)	2,60 – 3,10 meters
Air draft (min. – max.)	9,50 – 16,0 meters
Gross tonnage	257 GT
Net tonnage	77 NT
Deck cargo cap.	3x 1 TEU
Clear deck area	108 m ²
Cargo deck load	15 tons per m ²

Tank capacities / Transfer:

Fuel oil / gasoil	112.000 liters
Fresh water	31.000 liters
Lube oil / Dirty oil / Sewage	2.650 / 2.650 / 12.720 liters
Fresh water generator	3,5 m ³ /day
Transfer of fuel oil	35 m ³ /hr
Transfer of fresh water	35 m ³ /hr

Navigation & Radio:

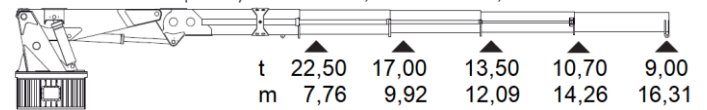
2x Radar, Echo sounder, V-Sat, AIS, GPS, Autopilot, 2x Compass, Navtex, SART, EPIRB, 2x VHF, SSB, CCTV, 2x Inmarsat-C+F & GMDSS Sea Area: A1, A2, A3.

Machinery / Performances:

Bollard pull	45,1 tons
Max speed	12,5 knots
Main engines	2 x Mitsubishi S16R-MPTA
Total output	2.340 kW = 3.182 BHP
Propulsion	Twin fixed propellers in nozzles
Diameter propellers	2,10 meter, Van Voorden
Bow thruster	340 kW
Generator sets	2x Mitsubishi 6D 16 T
Generator power	2x 120 kVa
Hydraulic powerpack	1x Mitsubishi S6A3 MPTK 600HP

Deck Equipment:

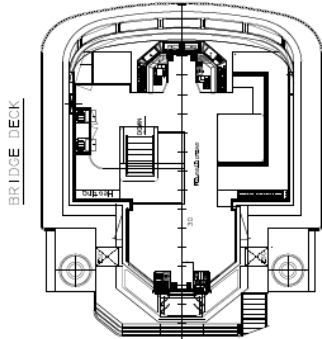
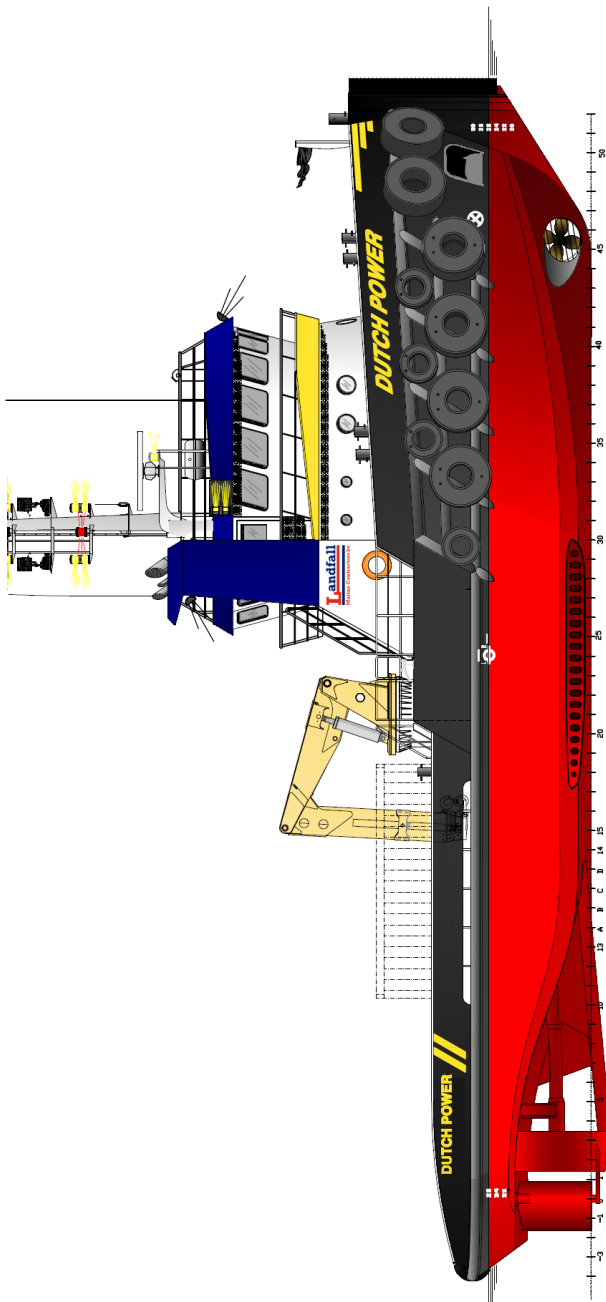
Winch	Maaskant Waterfall Winch
Towing drum	Pull Force 45T, Holding F. 90T 700 meters x 42 millimeters
Anchor handling drum	Pull Force 60T, Holding F. 120T 400 meters x 42 millimeters
Working wire	1x 400 meters, 42 millimeters
Tuggerwinch	2x 8 tons on aft. deck
Towing pins, wire catcher	Delta pins + Wire catcher
Push bow	Rubber Fender 900 mm
Stern roller	4.840 mm x dia 700 mm
Moonpool	Dimensions 700 mm x 700 mm Incl. David crane for lifting Situating portside midships
Main marine deck crane	HEILA HLRM 200-4SL
Maximum lift capacity	9,0 tons at 16,31 meters



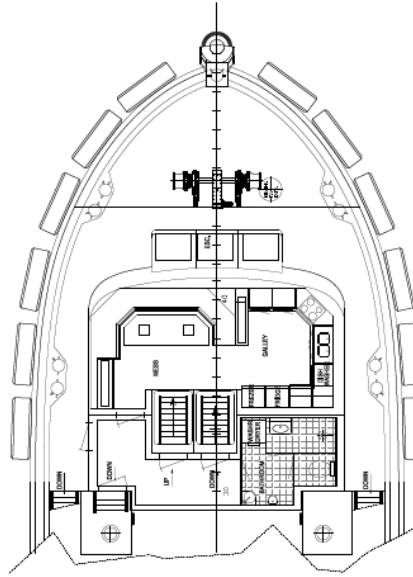
Accommodation:

Facilities	Airconditioned, 8 berths
Passenger transfer	15 P.O.B. (incl. crew max. 24hrs)

"DUTCH POWER" | General Arrangement



FORECASTLE DECK



MAIN DECK/BETWEEN DECK

