



## "VIKING" | Anchor Handling Tug / Utility Vessel

### Classification / Flag:

Flag / homeport	Dutch, Delfzijl
Year of built	2008
Classification	Bureau Veritas I  HULL • MACH • AUT-UMS Tug - Mon-shaft, Unrestr. Nav.
Class valid up to	2023
Call sign	PIHD
IMO number	9431903
MMSI number	245039000

### Dimensions:

Length O.A.	30,80 meters
Beam / width	11,00 meters
Depth at sides	4,20 meters
Draft (min. – max.)	3,50 – 4,20 meters
Air draft (min. – max.)	11,25 – 22,80 meters
Gross tonnage	332 GT
Net tonnage	99 NT
Clear deck area	96 m <sup>2</sup>
Cargo capacity	3x 1 TEU or 2x 2 TEU
Cargo deck load	6,0 tons per m <sup>2</sup>

### Tank capacities / Transfer:

Fuel oil / gasoil	220.000 liters
Fresh water	16.000 liters
Fresh water generator	2,0 m <sup>3</sup> /day
Transfer of fuel oil	50 m <sup>3</sup> /hr
Transfer of fresh water	50 m <sup>3</sup> /hr

### Navigation & Radio:

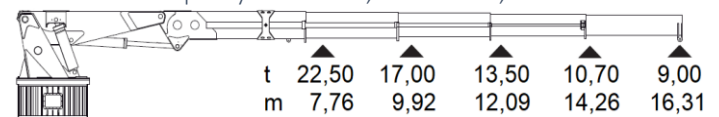
2x Radar, Echo sounder, V-Sat, AIS, GPS, Autopilot, 2x Compass, Navtex, SART, EPIRB, 2x VHF, SSB, CCTV, 2x Inmarsat-C+F, ECDIS Chart system TRANSAS & GMDSS Sea Area: A1, A2, A3.

### Machinery / Performances:

Bollard pull	67,8 tons
Max speed	12,5 knots
Main engines	2 x Mitsubishi S12U MPTK
Total output	4.476 kW = 6.100 BHP
Gearboxes	ZF Masson type W 20500 1/5
Propulsion	Twin fixed propellers in nozzles
Diameter propellers	2,40 meter, Van Voorden
Bow thruster	240 kW = 321 BHP, hydraulic dr.
Generator sets	2x Mitsubishi 6D 16 T
Generator power	2x 140 kVa
Hydraulic powerpack	1x Mitsubishi S6A3 MPTK 600hp

### Deck Equipment:

Winch	Kraaijeveld double drum winch
Towing drum	Pull Force 80T, Holding F. 180T
Towing wire	1.000 meters x 58 millimeters
Anchor handling drum	Pull Force 80T, Holding F. 180T
Anchor handling work wire	100 meters x 44 millimeters
Optional second tow wire	700 meters x 58 millimeters
Tuggerwinch	2x 8.500 kN on aft. deck
Tuggerwinch wires	2x 40 meters, 18 millimeters
Towing pins, wire catcher	Towing pins + Karmony fork
Push bow	2x Rubber Fender 500 mm
Stern roller	6.000 mm x dia 1.000 mm
Main marine deck crane	HEILA HLRM 200-4SL
Maximum lift capacity	9,0 tons at 16,31 meters



### Accommodation:

Facilities	Airconditioned, 8 berths
------------	--------------------------

# "VIKING" | General Arrangement

