



"NEPTUN 10" | Anchor Handling Tug / Utility Vessel

Classification / Flag:

Flag / homeport	U.K., Gibraltar
Year of built	2010
Classification	Bureau Veritas I HULL MACH MULTIPURPOSE AHT <i>Unrestr.</i>
Class valid up to	2020
Call sign	ZDJQ8
IMO number	9568615
MMSI number	423600570

Dimensions:

Length O.A.	40,00 meters
Beam / width	11,80 meters
Depth at sides	4,60 meters
Draft (min. – max.)	3,80 – 4,15 meters
Air draft	22 meters
Gross tonnage	498 GT
Net tonnage	149 NT
Deck cargo cap.	6x 1 TEU
Clear deck area	159 m ²
Cargo deck load	5 tons per m ²

Tank capacities / Transfer:

Fuel oil / gasoil	320.000 liters
Fresh water	151.000 liters
Fresh water generator	4,8 m ³ /day
Transfer of fuel oil	50 m ³ /hr
Transfer of fresh water	12 m ³ /hr

Navigation & Radio:

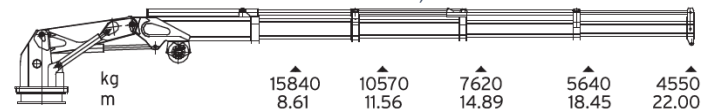
Radar, AIS, echo sounder, speed log, GPS, autopilot,
2x Compass, Navtex, SART, V-SAT, EPIRB, VHF, SSB,
Inmarsat C + GMDSS A3

Machinery / Performances:

Bollard pull	52,5 tons
Max speed	12,5 knots
Sailing radius without tow	12.000 miles
Sailing radius with tow	6.500 miles
Main engines	2x Caterpillar 3516B
Total output	2.982 kW = 4.000 BHP
Propulsion	Twin fixed propellers in nozzles
Diameter propellers	2,40 meters
Bow thruster	320 kW/430 BHP, van Ballegooy
Generator sets	3x Caterpillar 3406 + C18
Generator power	2x 245 kW + 1x 450 kW / 415 V
Hydraulic powerpack	2x 75 kW + 1x 22 kW

Deck Equipment:

Winch	ME Double Drum Waterfall
Towing drum	Pull Force 75T, Holding F. 150T
Anchor handling drum	Pull Force 75T, Holding F. 150T
Tow wires	1x 1.000 and 1x 800 meters
Tow wire diameter	52 and 48 millimeters
Tuggerwinch	5 tons
Towing pins	2x SWL 200 ton
Capstan	2x 5 tons
Shark yaws	SWL 200 ton, 50-75mm dia.
Stern roller	4 meters x 1,4 meters SWL 200t
Main marine deck crane	Promac HS AKC 220/22-1.4
Maximum lift capacity	4,55 tons @ 22,0 meters
Crane winch	SWL 4,55 tons



Accommodation:

Facilities Airconditioned, 9 berths

"NEPTUN 10" | General Arrangement

