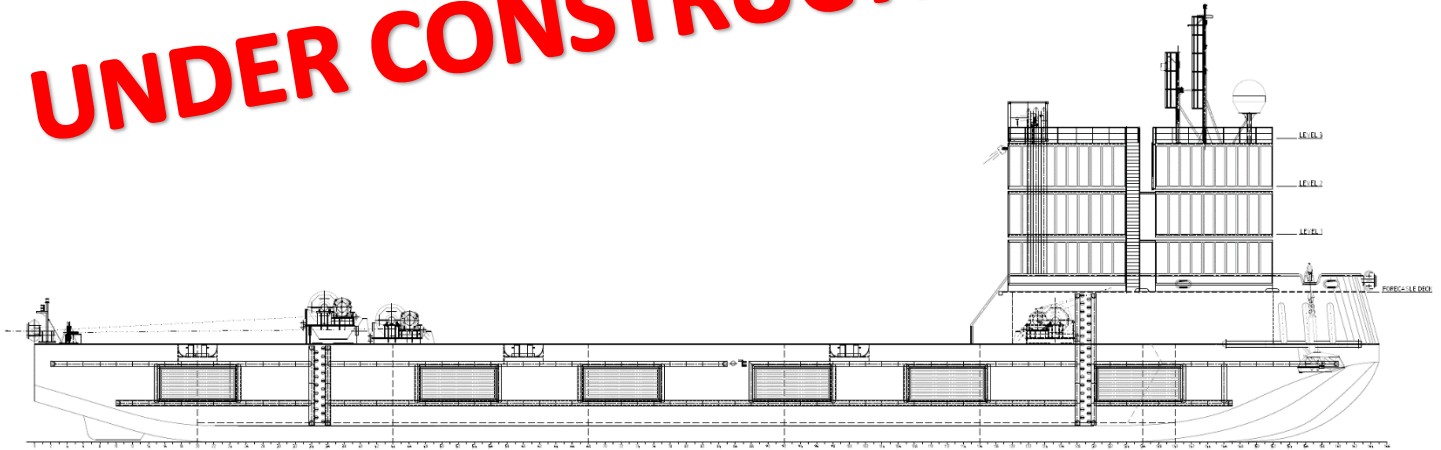


# UNDER CONSTRUCTION



## "NP 459" | 82.50m x 27.00m x 6.00m / Multipurpose barge SPS

### General:

Type of Vessel	Multipurpose Barge (acc. to SPS)
Flag / Homeport	Dutch, Hardinxveld
Year of build	2016 (converted in 2019)
Basic Functions	For deck cargo, available in a wide variety of sizes for all waters.
Classifications	Bureau Veritas, Unrestricted navigation, max. 60 P.O.B., Class valid up to 2024
Call sign / IMO number	

### Dimensions:

Length Overall	82,50 meters
Breadth Overall	27,00 meters
Depth	6,00 meters
Draft (min. – max.)	– 4,85 meters
Air draft	meters
Gross Tonnage	3.503* ton
Net Tonnage	1.050* ton
Cargo Capacity with max consumables	8.050* ton
Clear Deck Area	2.227* m <sup>2</sup>
Deck Load	20 ton/m <sup>2</sup>

### Tank capacities / Transfer:

Fuel oil / gasoil	220.000 liters
Fresh water	40.800 liters
Sewage	
Transfer of fuel oil	40 m <sup>3</sup> /hr at 4 bar,
Transfer of fresh water	40 m <sup>3</sup> /hr at 4 bar.
Ballast System	SB: 5 tanks total 1.300 m <sup>3</sup> , PS: 5 tanks total 1.300 m <sup>3</sup> , Pump capacity 2x 400 m <sup>3</sup> /hr

### Navigation & Radio:

Echo sounder, V-SAT KU band antenna, AIS, UHF, DGPS Compass, DGNSS, 2x Compass, Navtex, SART, EPIRB, VHF, GMDSS VHF, GSM, Wind meter, Speed log & TVRO KU band antenna

### Power and Propulsion:

Main engines	3x Cummins KTA50
Stern engines	
Bow thrusters	
Dynamic Positioning System	
DP lay-out	
Speed	
Generator sets	2x Cummins KTA19
Generator power	kVA, 60Hz, 230/400V

### Deck Equipment:

Winches	6x or 8x 60 ton Full CT winches. 120 ton hold at 1st layer. 1.000m, Ø48mm. Central controlled from bridge
Spud arrangement optional	2x BB 1.220 mm (mooring only)
Boarding ladders	Recessed ladders, 2x PS & 2x SB
Towing brackets	4x SMIT Brackets
Bridle recovery winch	Yes, including frame
Anchor	Yes, 1 anchor on aft.

### Accommodation:

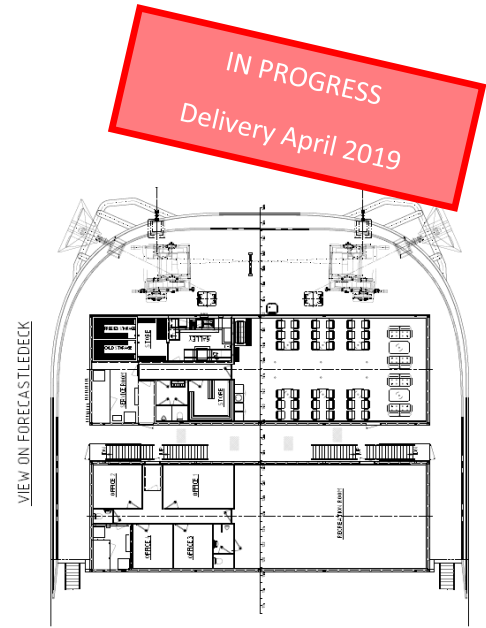
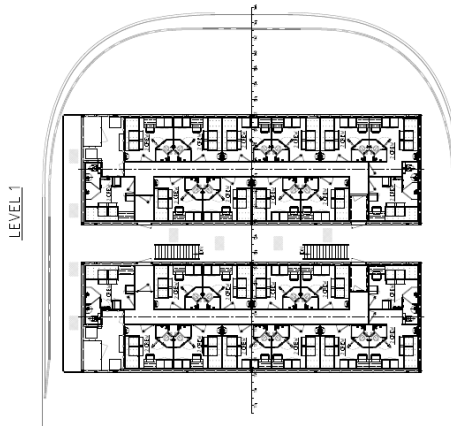
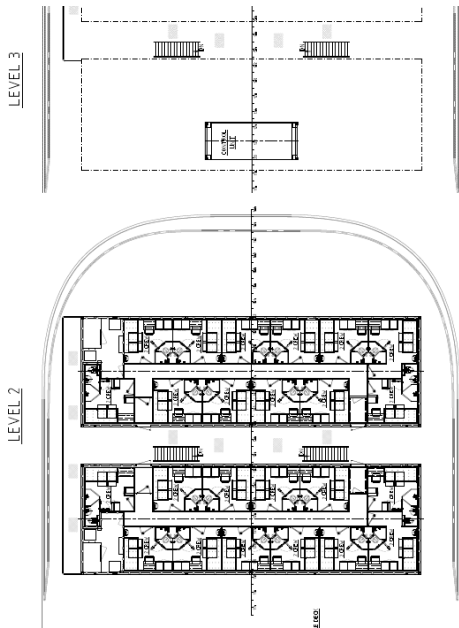
3x Accommodation	Total 36 cabins, 60 beds & AC (3 units of 24x7,2m)
Service Unit	Mess room, Galley, Dry store, Cold store, Freezing store, Office, Toilets, Changing room & AC (18,2x7,2m).
Office Unit	3 offices, 1 recreation & 1 toilet.
Control Unit	Large bridge with 5 offices** 2x 800kW + 1x 350kW

### Equipped With:

Safety equipment and life rafts for max. 60 P.O.B.

\* Before the rebuilding to multipurpose barge. \*\* Not installed yet

# "NP 459" | General Arrangement



IN PROGRESS  
Delivery April 2019

